

MOUTHPIECE PRACTICE

0

2nd

1st

1
2

2
3

1
3

1
2
3

1
2
3

1
3

2
3

1
2

1

2

0

Fr

www.hickeys.com



**HICKEY'S
MUSIC CENTER**

104 Adams Street • Ithaca, NY 14850
607.272.8262 • 1.800.HICKEYS (1.800.442.5397)
www.hickeys.com

LIP AND TONGUE SLURS

Ex. 1

The exercise consists of five staves of music. The first staff is in treble clef and contains a sequence of notes with fingerings 0, 2, 0, 0, 0, 0, 0, 0, 0, 0, 0, 0. A slur covers the first nine notes. The second staff is in bass clef and contains a sequence of notes with a '2' above the first note and a slur covering the first nine notes. The third, fourth, and fifth staves are in bass clef and show slurs over sequences of notes, with the third staff starting with a 'Slow' marking.

By arching the tongue, raising the middle of the tongue as far as possible to reduce or expand the mouth cavity. when used along with contracting the side muscles.

Lowering of the tongue, enlarging the mouth cavity. when used along with contracting the side muscles of the embouchure.

Practice playing G to F sharp first and then to the F-sharp by slurring to the F-sharp by slurring to the usual fingering, the 2nd valve but lowering the G-flat.

Continue to the 1st valve

Pr



HICKEY'S MUSIC CENTER

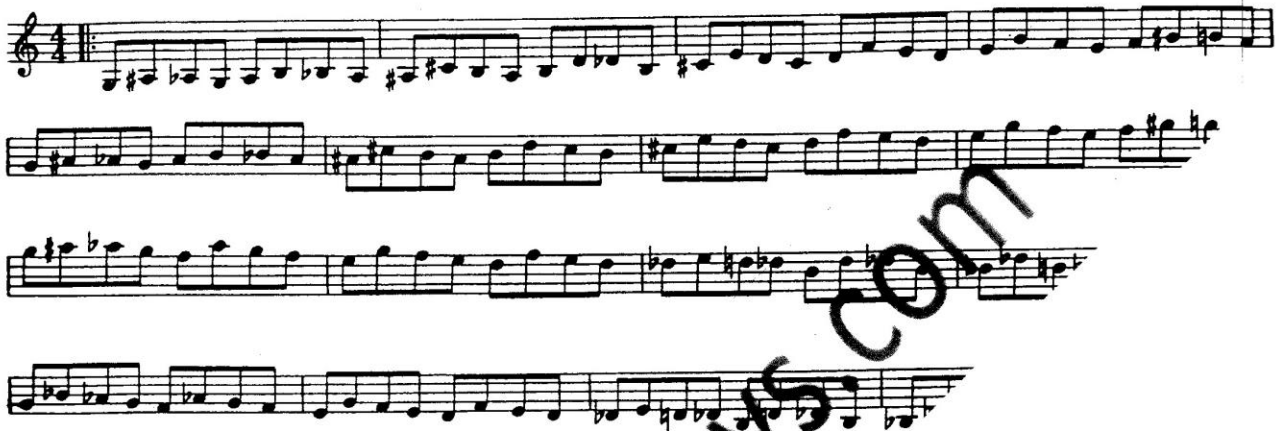
104 Adams Street • Ithaca, NY 14850
607.272.8262 • 1.800.HICKEYS (1.800.442.5397)
www.hickeys.com

PART 4 DIMINISHED SCALE EXERCISES

Ex. 1



Ex. 2



Ex. 3



Ex. 4



**HICKEY'S
MUSIC CENTER**

104 Adams Street • Ithaca, NY 14850
607.272.8262 • 1.800.HICKEYS (1.800.442.5397)
www.hickeys.com

Ex. 6

The musical score for Ex. 6 consists of 12 staves of music. The first two staves are in 4/4 time with a key signature of one sharp (F#). The third and fourth staves are in 4/4 time with a key signature of two sharps (F# and C#). The fifth and sixth staves are in 4/4 time with a key signature of one flat (Bb). The seventh and eighth staves are in 4/4 time with a key signature of one sharp (F#). The ninth and tenth staves are in 4/4 time with a key signature of two sharps (F# and C#). The eleventh and twelfth staves are in 4/4 time with a key signature of one sharp (F#). The music is primarily composed of eighth and sixteenth notes, with some rests and dynamic markings.

www.hickeys.com



**HICKEY'S
MUSIC CENTER**

104 Adams Street • Ithaca, NY 14850
607.272.8262 • 1.800.HICKEYS (1.800.442.5397)
www.hickeys.com

Ex. 11



Ex. 12



Ex. 13



Ex. 14



Ex. 15



Ex. 16



F

www.hickeys.com



**HICKEY'S
MUSIC CENTER**

104 Adams Street • Ithaca, NY 14850
607.272.8262 • 1.800.HICKEYS (1.800.442.5397)
www.hickeys.com