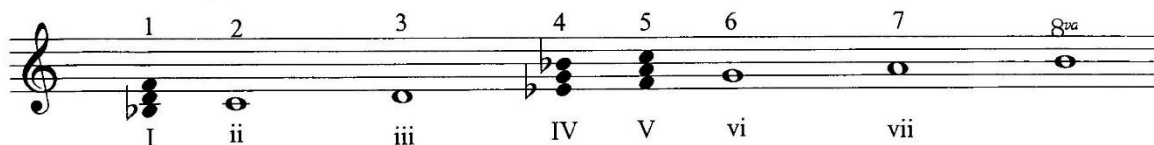


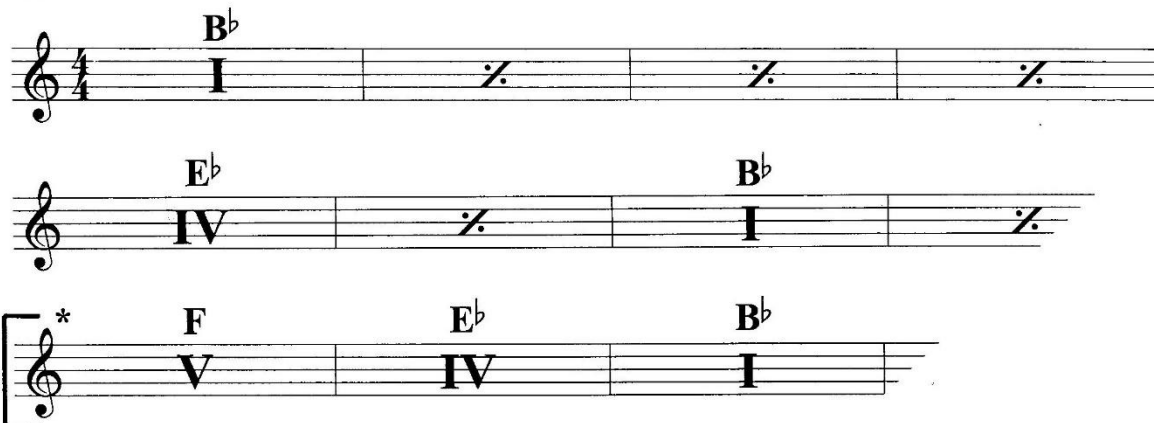
Most, if not all, of the early 12 bar blues were based on triads. The roman numerals used refer the the chord degree in regard to the key you're in.

Example: I = the one chord.

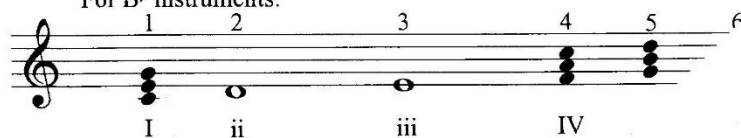
For concert (C) instruments:



Concert Instruments:



For Bb instruments:



Bb Instruments:



**HICKEY'S  
MUSIC CENTER**

104 Adams Street • Rhine, NY 14880  
607.272.8262 • 1.800.HICKEYS (1.800.442.5397)  
www.hickeys.com

## V - IV - I Turnaround

1.



2.



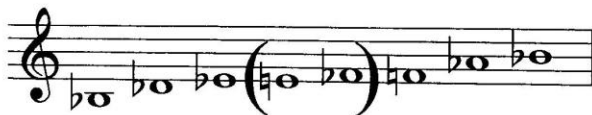
3.



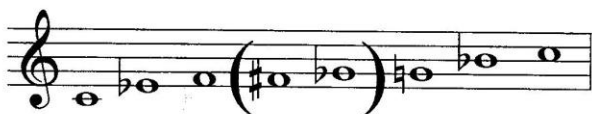
4.

**HICKEY'S  
MUSIC CENTER**104 Adams Street • Rhine, NY 14880  
607.272.8262 • 1.800.HICKEYS (1.800.442.5397)  
www.hickeys.com

In the next section, all the riffs are based on the blues scale. A blues scale is made up of the following:  
1,  $\flat 3$ , 4,  $\flat 5$ , 5,  $\flat 7$ , 1 (8va)



**B $\flat$  Blues Scale**  
(Concert instruments)



**C Blues Scale**  
(B $\flat$  instruments)

Note: The  $\sharp 4$  or  $\flat 5$  are the same

By this scale having the  $\flat 3$ ,  $\flat 5$ , and the  $\flat 7$  it can b over any of the previous chord changes of the ' as some blues changes we haven't discussed

As an exercise, find a pianist, a guitar of the B $\flat$  blues and try playing some with them. Write down which ones don't. Then try to figure the most part, some, if not in the blues scale.

The blues scale is blues, but I don't it can begin to



**HICKEY'S  
MUSIC CENTER**

104 Adams Street - Ithaca, NY 14850  
607.272.8262 • 1.800.HICKEYS (1.800.442.5397)  
www.hickeys.com

45.



46.



47.



48.



**HICKEY'S  
MUSIC CENTER**

104 Adams Street - Ithaca, NY 14850  
607.272.8262 - 1.800.HICKEYS (1.800.442.5397)  
[www.Hickeys.com](http://www.Hickeys.com)