

Contents

Session 1

Alla Breve, 4

Session 2

Range Development, Low B \flat , 6
Syncopation, 6

Session 3

Transposition, 9

Session 4

Range Development Middle C \sharp (D \flat)
and Low C \sharp (D \flat), 11
Enharmonic Equivalents, 11
The Scale of D Major, 11

Session 5

Range Development A \flat (G \sharp), E \flat (D \sharp),
Low A \flat (G \sharp), 14
Minor Scales, 14
The Scale of A minor, 15

Session 6

Range Development, E and F, 17
The Scale of F Major, 17
The Scale of D minor, 20
The Scale of B \flat Major, 20
The Scale of G minor, 21

Session 7

Review of Keys
C Major, 22
A minor, 24
D minor, 26
B \flat Major, 27
G minor, 28

Session 8

Review of Keys
E \flat Major, 29
C minor, 29

Session 9

Review of Keys
G Major, 32
D Major, 33
The Scale of E minor, 35
The Scale of B minor, 36
The Scale of A Major, 37

Session 10

Note Values, 40
 $\frac{3}{8}$ Time, 41

Session 11

$\frac{6}{8}$ Time, 42

Session 12

Chromatic Scales, 44
Review, 46

The Music

Academic Festival Overture, Theme (Brahms), 9, 10
All Kinds Of Everything, 27
All My Loving, 4
Ballad of Davy Crockett, 5
Bibbidi-Bobbidi-Boo, 42
Bobby Shaftoe, 9
British Grenadiers, The, 19
Can-Can, 13
Chorale (J.S. Bach), 12
Dornröschen, 28
España, 41
Feinsliebchen, du sollst mir nicht barfuss gehn, 24
Fortuosity, 46
Gavotte from 'Hercules', 29
Green Leaves of Summer, The, 36
Gypsy Song (Brahms), 28
Have Yourself A Merry Little Christmas, 22
Late On Parade, 30
Leonora No. 3, Overture, 40
Mango Walk, 8
Mediaeval Mixture, 30
My Own True Love, (Tara's Theme), 25
On Top Of Old Smokey, 12
Picnic, 6
Richard Coeur de Lion, 26
Romance (Beethoven), 19
Rule Britannia, 38
Russian Easter (Rimsky-Korsakov), 13
Rustic Romp, 42
Sarabande from the 'Holberg Suite', 41
Shepherd's Hey, 5
Supercalifragilisticexpialidocious, 34
Symphony No. 40 (Mozart), 15
Symphony No. 4 (Schubert), 28
Symphony No. 4 (Schumann), 7
William Tell Overture, 40
Yesterday, 16
You Are My Sunshine, 32

Session 1

In Book 1, you played music in $\frac{2}{4}$ (simple duple), $\frac{3}{4}$ (simple triple) and $\frac{4}{4}$ (simple quadruple) times. Now we'll look at *alla breve* (cut common) indicated by \mathbb{C} or $\frac{2}{2}$, with 2 minims to the bar.

This is a simple duple time signature and can be likened to $\frac{2}{4}$ with the note values doubled. Many marches are written in \mathbb{C} .

Provided that you observe the metronome markings the four bars in \mathbb{C} will sound the same as the $\frac{2}{4}$ version.



ALL MY LOVING

John Lennon and Paul McCartney

Tempo marking: $\text{♩} = 90$

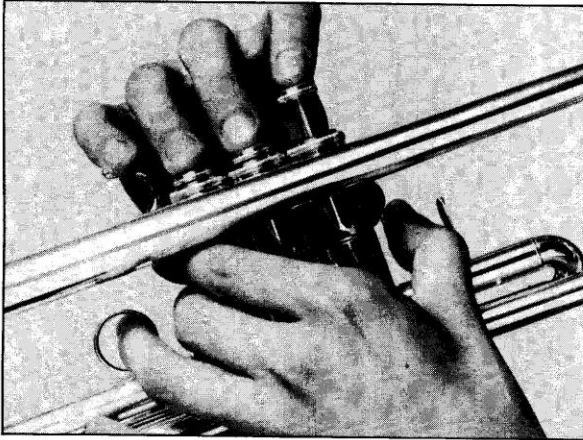
First measure: *mp*

Fourth measure: *mf*

The musical score for 'All My Loving' is written in \mathbb{C} time. It consists of five staves of music. The first measure is marked *mp* and the fourth measure is marked *mf*. The melody is a simple duple rhythm of half notes.

Session 5

RANGE DEVELOPMENT A \flat (G \sharp) E \flat (D \sharp) LOW A \flat (G \sharp)



Learn A \flat (G \sharp) E \flat (D \sharp) Low A \flat (G \sharp)



Refer to the note on enharmonic equivalents in Session 4.
These new notes make available another harmonic series and several new key signatures.

LIP SLURRING

1. Buzz on the mouthpiece.
2. Repeat on the trumpet.



MINOR SCALES

The last three notes of the major scale are the first three notes of its relative minor.

The Scale of C Major

A is the starting note of the
relative minor scale (A minor).



There are three basic forms of the minor scale;
the natural minor, the harmonic minor and the melodic minor.

THE SCALE OF A MINOR (natural form)



THE SCALE OF A MINOR (harmonic form)



THE SCALE OF A MINOR (melodic form)



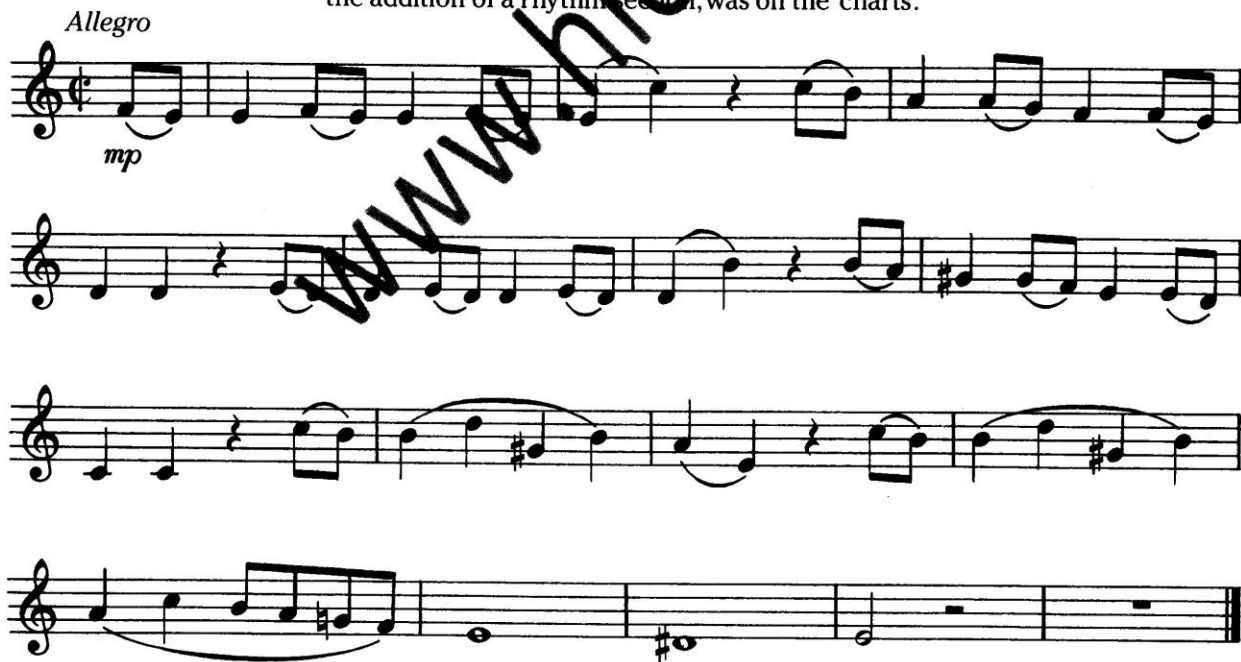
A MINOR ARPEGGIO



THEME FROM SYMPHONY No. 40

Wolfgang Amadeus Mozart

A few years ago this theme, with a modification of style and with the addition of a rhythm section, was on the 'charts'.



This beautiful ballad from the mid-60's was also high on the 'charts' and has since become a standard for jazz singers and instrumentalists.

YESTERDAY

Words and music by **John Lennon** and **Paul McCartney**

Moderato (♩ = 100-108)

p

mf

www.hickeys.com

© Copyright 1965 Northern Songs Limited, 3/5 Rathbone Place, London W1. All Rights Reserved.

Now see if v



HICKEY'S MUSIC CENTER

104 Adams Street • Ithaca, NY 14850
607.272.8262 • 1.800.HICKEYS (1.800.442.5397)
www.hickeys.com

Session 9

REVIEW OF KEYS

G MAJOR

THE SCALE OF G MAJOR (extended to one and a half octaves)



G MAJOR ARPEGGIO (extended to one and a half octaves)

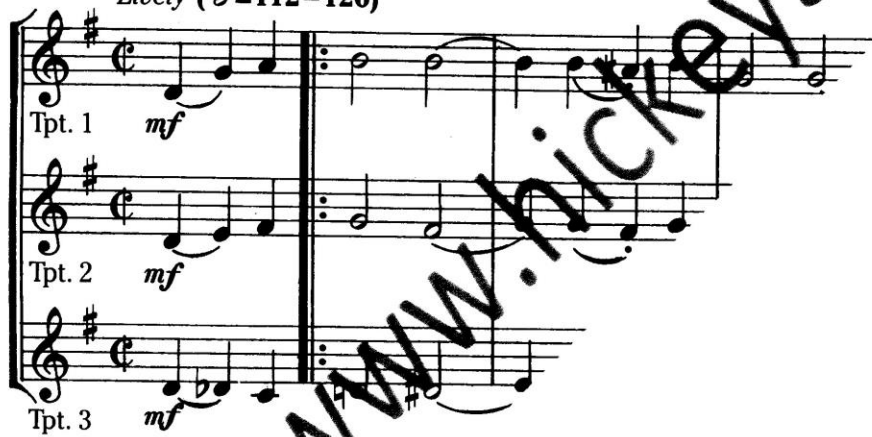


This tune will work equally well at a slow or fast tempo.
Hence the two metronome markings.
At the slow speed ignore the phrase marks and play legato.

YOU ARE MY SUNSHINE

Words and Music by Jimmy Davis
Arr

Slow (♩ = 92-96)
Lively (♩ = 112-120)



HICKEY'S
MUSIC CENTER

104 Adams Street • Ithaca, NY 14850
607.272.8262 • 1.800.HICKEYS (1.800.442.5397)
www.hickeys.com

Session 11

TIME

In $\frac{6}{8}$ time there are two beats in each bar.

In $\frac{2}{4}$ (simple duple) the $\frac{1}{2}$ beats subdivide into $\frac{1}{4}$ $\frac{1}{4}$

In $\frac{6}{8}$ (compound duple) $\frac{1}{2}$ $\frac{1}{2}$ subdivide into $\frac{1}{8}$ $\frac{1}{8}$

RUSTIC ROMP

Don Bateman

D.C. (Da Capo) al Fine means repeat from the beginning to the Fine (Ending).

Student *Giocoso* ($\frac{1}{2}$ = 108)

Musical score for 'Rustic Romp' by Don Bateman. The score is written for two staves, labeled 'Student' and 'Teacher'. The key signature is one flat (B-flat), and the time signature is 6/8. The student part begins with a treble clef and a key signature of one flat. The teacher part begins with a bass clef and a key signature of one flat. The score includes a first ending marked '1' and a second ending marked '2', both leading to a 'Fine' ending. A large diagonal watermark 'www.hickeys.com' is visible across the score.

© Copyright 1986 Don Bateman. Used with permission. All Rights Reserved. International

BIBBIDI - BOBBIDI - BOO

Steady Two ($\frac{1}{2}$ = 112-114)

Musical score for 'Bibbidi - Bobbidi - Boo' by Don Bateman. The score is written for two staves, labeled 'Tpt. 1' and 'Tpt. 2'. The key signature is one sharp (F-sharp), and the time signature is 6/8. The score begins with a treble clef and a key signature of one sharp. The first staff is marked 'mf' (mezzo-forte). The score includes a first ending marked '1' and a second ending marked '2', both leading to a 'Fine' ending.



HICKEY'S
MUSIC CENTER

104 Adams Street • Ithaca, NY 14850
607.272.8262 • 1.800.HICKEYS (1.800.442.5397)
www.hickeys.com