

CONTENTS

UNIT 1 PLAYING C D E F G

* ✓				
—	Reflection		4	2
—	My Own Song	<i>improvising on C D E F G</i>	5	
—	Ode To Joy		6	3
—	Carmen's Tune		7	3 4 3
—	Andantino	<i>legato</i>	8	4 6 4
—	Big Ben		9	7
—	Please, No Bees!	<i>harmonic intervals, 2nds & 3rds</i>	10	6 8
—	Clapping Song	<i>staccato</i>	11	7 10 6

UNIT 2 4THS

—	Hoedown	<i>4ths</i>	12	8 12
—	Sunlight Through The Trees		13	10 13 8
—	Bingo	<i>upbeat</i>	14	13 14
—	Travelling Along The Prairie		15	14 15 10
—	No One To Walk With		16	16 11
—	Painted Rocking Horse		18	18 16
—	Tick Tock The Jazz Clock		20	19 17

UNIT 3 5THS

—	Watercolors	<i>5ths</i>	22	22 18
—	Circle Dance	<i>two-note slurs</i>	23	24 19 12
—	Basketball Bounce		24	26 20
—	Allegro	<i>8va</i>	25	21
—	Great News!	<i>8va</i> <i>ff</i>	26	28
—	Brass Fanfare		27	29

UNIT 4 SHARPS #, FLATS b & NATURALS ♮

—	Little River Flowing	#	28	22
—	Quiet Thoughts		29	30 14
—	Star Quest	<i>A B A form</i>	30	23 18
—	A Little Latin	b	32	32 24
—	Stompin'	>	33	34 20
—	First Light	<i>ritard</i>	34	25 22
—	Inspector Hound	♮	36	36 26 24
—	Bayou Blues		37	37 28 26
—	Serenade		38	

UNIT 5 PLAYING G A B C D

—	Summer Evenings	<i>ledger lines</i>	40	29
—	My Own Song	<i>improvising on G A B C D</i>	42	31
—	Pop!		43	38 32 28
—	Go To Sleep	<i>pp</i>	44	34
—	Jig	<i>1st & 2nd endings</i>	45	39 35 30
—	Go For The Gold		46	40 37
—	Certificate		48	

* Students can check pieces as they play them.

A B A Form

In "Star Quest," lines one and two are the A section, lines three and four are the B section. After B, you play A one more time.

The form of this piece is A B A.



Star Quest

A Heroic March Phillip Keveren

f Glid - ing through the heav - ens, won - der where we are?

5

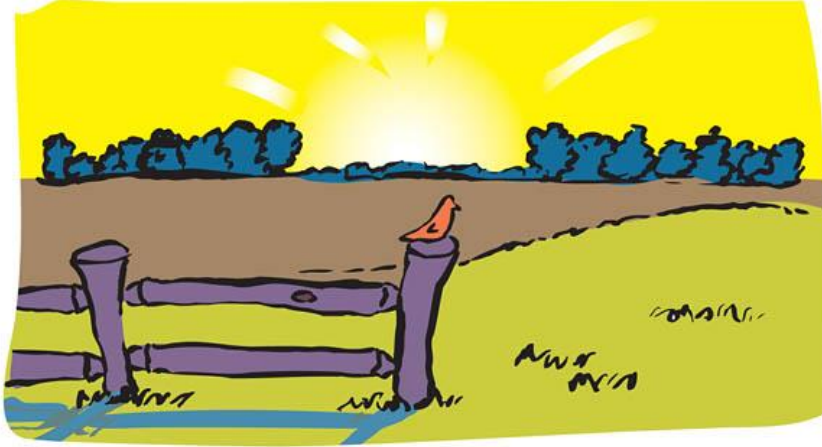
5 Fine

Great ga - lac - tic trav - 'lers, search - ing for a star.

Accompaniment (Student plays one octave higher than written.) 24

Heroic March (♩=120) 5 Fine

mf



RITARD
Ritard or *rit.* means to slow the tempo gradually.

First Light



Gaelic Melody
 Words by Fred Kern

Sweetly

mp First light of morn - ing sig - nals a

new day. Birds be - gin talk - ing

5 3 2 5

Accompaniment (Student plays one octave higher than written.)   27

Sweetly (♩=120)

p

UNIT 5

L.H. R.H.

G A B C D G A B C D

5 4 3 2 1 1 2 3 4 5

New Notes D B C D

LEDGER LINES

Ledger Lines are added when notes are written higher or lower than the staff.

Summer Evenings



"Alouette"
Words by Barbara Kreader

Sweetly

Words by Barbara Kreader

mp Sum - mer eve - nings, moon - light through my win - dow.

1

Star - light shin - ing, breez - es blow - ing sighs.

3

Accompaniment (Student plays one octave higher than written.) 31

Sweetly (♩=150)

p