

Le Cygne

The Swan / Der Schwan
Trombone & Piano
Arr.: Scott Richards
Camille Saint-Saëns

EMR 2058L

TROMBONE/BASSOON

“Le cygne”

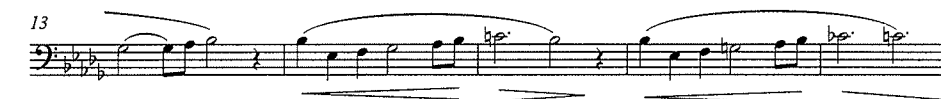
“The Swan” / “Der Schwan”

Camille Saint-Saëns

(1835-1921)

Arr.: Scott Richards

Adagio non troppo $\text{♩} = 76-80$





“Le cygne”

“The Swan” / “Der Schwan”

Camille Saint-Saëns

(1835-1921)

Arr.: Scott Richards

Adagio non troppo $\text{♩} = 76-80$

Piano

pp

Measures 1-2 of the piano score. The right hand plays a series of eighth notes, and the left hand plays a steady eighth-note accompaniment. The piece is in a key with three flats and a 3/4 time signature.

3

sim. sempre legato

Measures 3-4 of the piano score. The right hand continues with eighth notes, and the left hand has a more active accompaniment. The instruction 'sim. sempre legato' is written above the right hand.

5

Measures 5-6 of the piano score. The right hand continues with eighth notes, and the left hand has a more active accompaniment.

7

Measures 7-8 of the piano score. The right hand continues with eighth notes, and the left hand has a more active accompaniment.

9

Measures 9-10 of the piano score. The right hand continues with eighth notes, and the left hand has a more active accompaniment.

11

Measures 11-12 of the piano score. The right hand continues with eighth notes, and the left hand has a more active accompaniment.

13

Measures 13-14 of the piano score. The right hand continues with eighth notes, and the left hand has a more active accompaniment.

15

Measures 15-16 of the piano score. The right hand continues with eighth notes, and the left hand has a more active accompaniment.

17

p

pp

Measures 17-18 of the piano score. The right hand continues with eighth notes, and the left hand has a more active accompaniment. The dynamic markings *p* and *pp* are indicated.