

Nocturne in E-flat Major

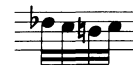
à Madame Camilla Pleyel

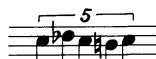
Frédéric Chopin (1810–1849)

Op. 9, No. 2

Andante M.M. ♩ = 96~100

Ⓐ In the first French edition, the turn is *over* the note, indicating this manner of performance:



Most performers prefer . We present the original text and leave the decision to the individual.

Ⓑ This trill begins on the upper note.